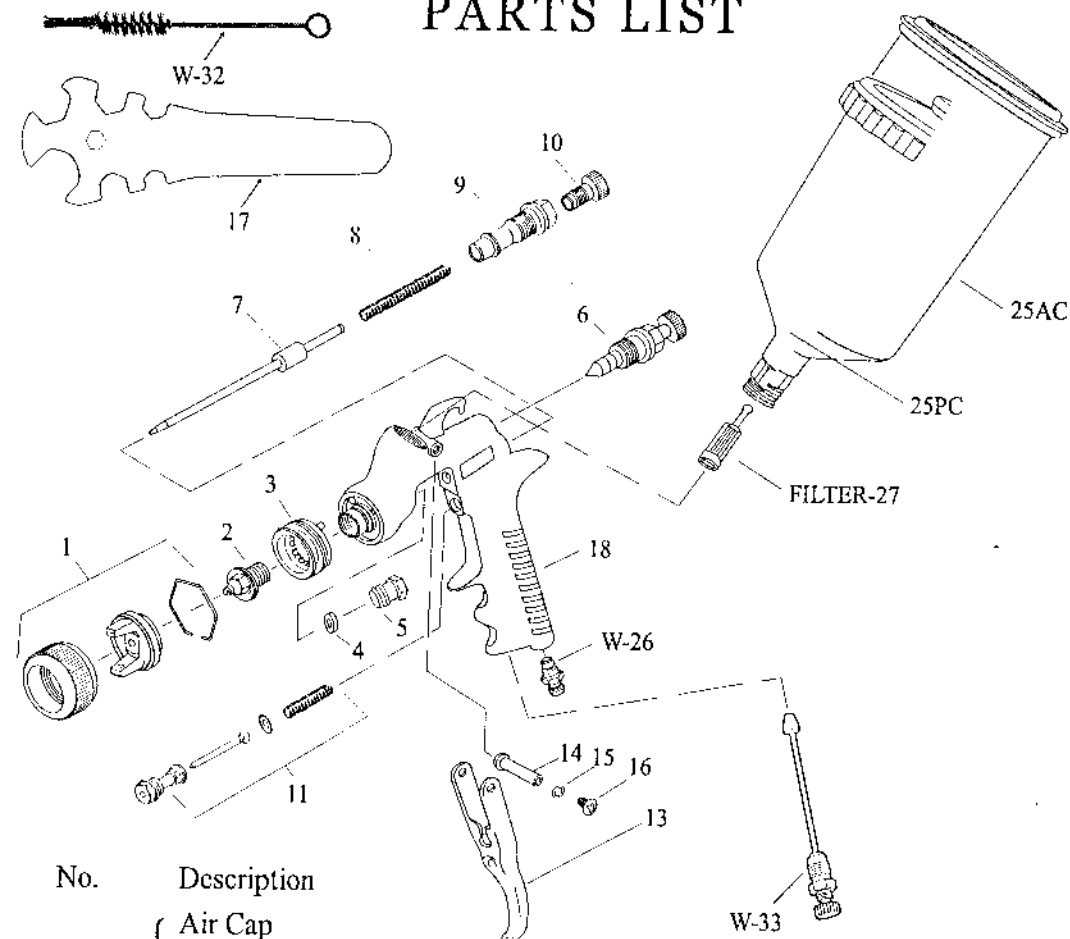


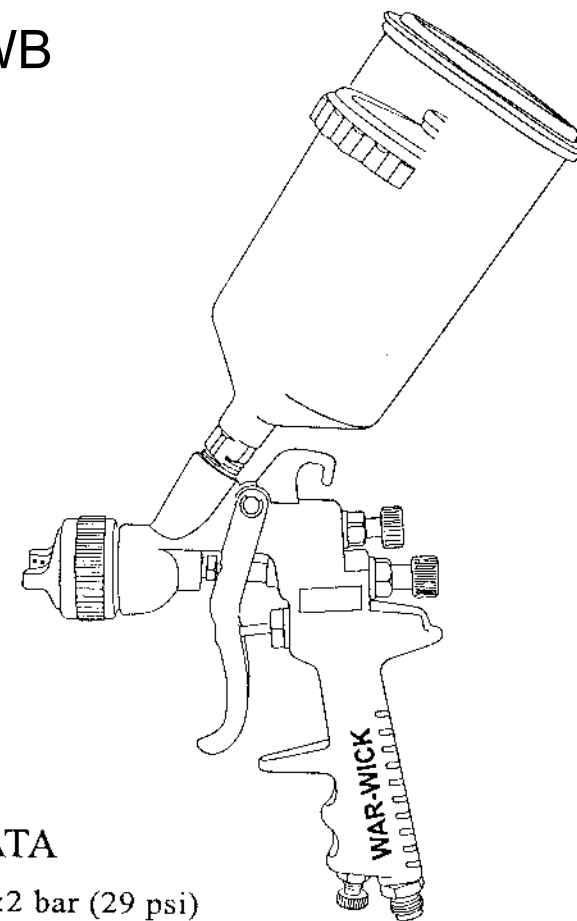
## PARTS LIST



No.	Description	No.	Description
1	{ Air Cap Air Cap Retaining Ring Spring Clip	W-26	Air Inlet Connector
2	Fluid Nozzle	13	Trigger
3	Baffle	14	Trigger Pin
4	Needle Packing	15	Spring Washer
5	Needle Packing Nut	16	Screw
6	Spreader Valve	W-33	Air Adjustment Valve Set
7	Needle	17	Spanner
8	Spring	W-32	Brush
9	Body Bushing	FILTER-27	Material Strainer
10	Needle Adjusting Screw	25PC	600cc Nylon Cup
11	{ Air Valve Body Air Valve Packing Spring	25AC	1000cc Aluminum Cup
		18	Gun Body

# GRAVITY FEED SPRAY GUN

878H HE / WB



## TECHNICAL DATA

Suggest inlet pressure: 2 bar (29 psi)

Air consumption: 10 SCFM at 29 psi

Weight: 500 grams for gun only

190 grams for 1.0 L Aluminum cup only

150 grams for 0.6 L Nylon cup only

Spray gun distance to object: about 8"~12"

The paint viscosity is different for the paint properties and painting condition. The best suggestion is using 1.4 fluid nozzle with the viscosity at 16~20 second by FORD #4 cup

Nozzle sizes available: 1.2 mm, 1.3 mm, 1.4 mm, 1.5 mm.