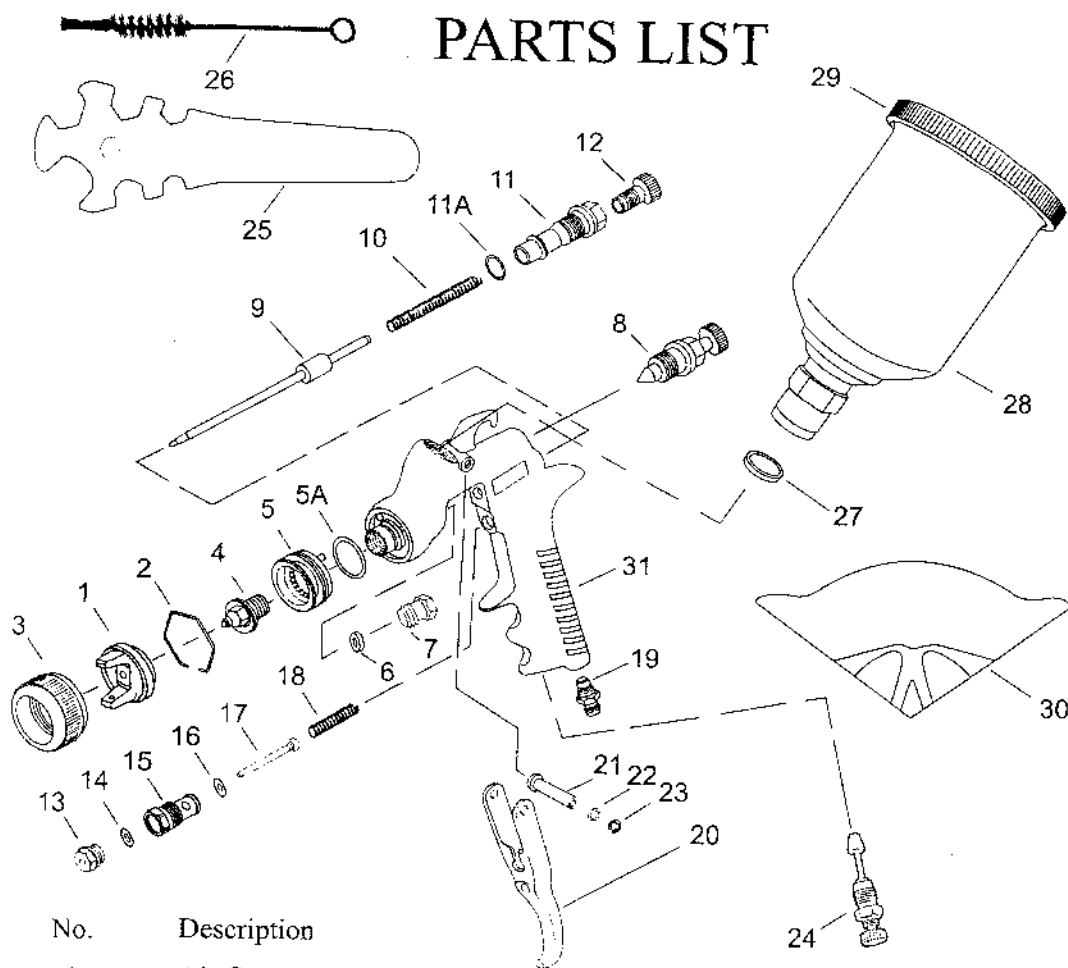


PARTS LIST



No. Description

1. Air Cap
2. Air Cap Retaining Ring
3. Spring Clip
4. Fluid Nozzle
5. Baffle
- 5A. Baffle Packing
6. Needle Packing
7. Needle Packing Nut
8. Spreader Valve
9. Needle
10. Spring
11. Body Bushing
- 11A. O-Ring
12. Needle Adjusting Screw
13. Screw
14. Teflon Seal
15. Bushing

No.

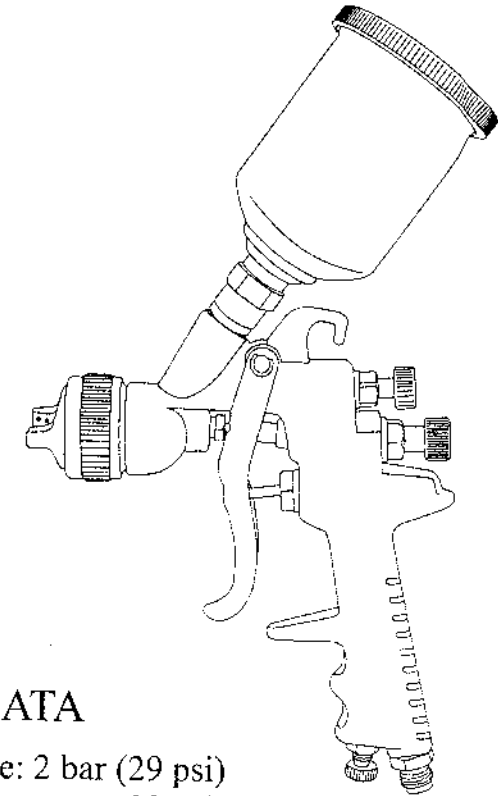
Description

16. P.V.C. Seal
17. Air Valve Stem
18. Spring
19. Air Inlet Connector
20. Trigger
21. Trigger Pin
22. Spring Washer
23. E-Ring
24. Air Adjustment Valve Set
25. Spanner
26. Brush
27. Cup Packing
28. 150cc Aluminum Cup
29. Cup Lid
30. Filter Paper
31. Gun Body

HIGH VOLUME LOW PRESSURE GRAVITY FEED SPRAY GUN

878S/HVLP

878SHE / WB



TECHNICAL DATA

Suggest inlet pressure: 2 bar (29 psi)

Air consumption: 4CFM at 29 psi

Weight: 280 grams for gun only

98 grams for 0.15 L Aluminum cup only

Spray gun distance to object: about 4" ~ 6"

You will require different paint's viscosity according to the character of paint and coating, recommend use Ford #4 viscosity cup at 15-23 second.

Air Cap pressure < 10 psi

Sound Power Dba < 70

Nozzle sizes: 0.8mm, 1.0mm, 1.2mm, 1.5mm