

# 903H Operation Manual

Important : Read and follow all instructions and SAFETY PRECAUTIONS before using this equipment

## MODELS

Air Cap No. - Fluid Tip size - Type of feed (G : Gravity, S : Suction, P : Pressure)

## SPECIFICATIONS

Maximum Working Pressure : 100 PSI

Suggested Air Pressure : 40~50 PSI

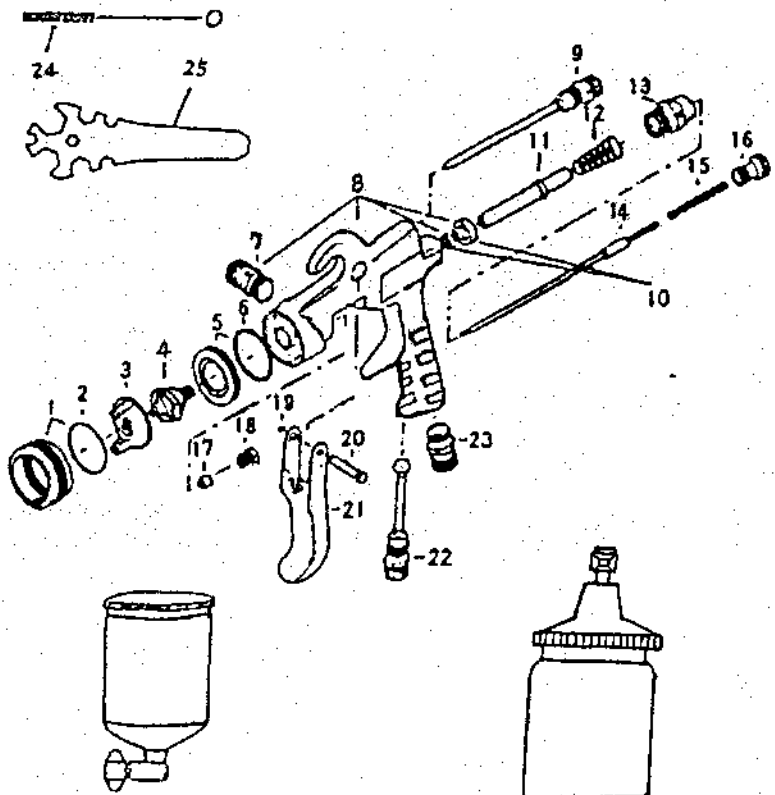
Chart. 1

Air Cap No. Part Number	Tip size (mm)				Feed	Air consumption Gun inlet pressure	Pattern width (mm)	Application	Fluid inlet	Air Inlet	Weight (g)
	0.8	1.1	1.4	1.8							
H1	●				G	80L/min 0.1 MPa	100	Spot, Touch-up	G1/4	G1/4	290
H2		●	●	●	G	260L/min 0.2MPa	250	AutoRefinishing, General Purpose, All finishes, Fine atomization			
			●	●	S						
H3		●			P	220L/min 0.2MPa	230	Wood, metal finishing LVMP, Fine atomization			

## PARTS LIST

Chart. 2

Ref. No.	Description	Q'ty
1	Retaining Ring	1
2	Seat	1
3	Air Cap	1
4	Fluid Tip	1
5	Baffle	1
6	Gasket	1
7	Fluid Inlet	1
8	Gun Body	1
9	Pattern Valve	1
10	Valve Seal Kit	1
11	Air Valve	1
12	Valve Spring	1
13	Air Valve Bushing	1
14	Needle	1
15	Needle Spring	1
16	Adjusting Screw	1
17	Needle Packing	1
18	Packing Gland	1
19	E-ring Kit of 10	1
20	Bearing Stud	1
21	Trigger	1
22	Cheater Valve	1
23	Air Connector	1
24	Brush	1
25	Spanner	1



0.4L CUP-G

0.6L CUP-S

## SAFETY PRECAUTIONS

This manual contains information that is important for you to know and understand.  
This information relates to USER SAFETY and PREVENTING EQUIPMENT PROBLEMS.  
Read and follow SAFETY PRECAUTIONS before using this equipment.

### FIRE OR EXPLOSION HAZARD

1. When spraying, adequate exhaust must be provided to keep air free of accumulations of flammable vapors which may cause fire or explosion.
2. Smoking must never be allowed in the spray area.
3. Static electricity is generated and a static spark could be produced in the spray area. To prevent the risk of fire or explosion, ground without fail all conductive objects in the spray area.
4. Make it sure to use and ground hoses with static wire for spray gun operation. If improperly grounded, a static spark possibly produced may cause fire or explosion.
5. Fire extinguishing equipment must be provided in the spray area.
6. Solvents used for cleaning must have a flash point equal to or higher than that of the coating. Those for general cleaning must have flash points above 37.8°C(100° F) to prevent the risk of fire.

### INHALING TOXIC SUBSTANCES

1. Toxic vapors and liquids are harmful to health. When spraying, adequate exhaust must be provided to keep the air free of accumulations of toxic materials and the use at all times of respiratory protective equipment must be set compulsory.
2. Always wear eye protection when spraying or cleaning the equipment.
3. Certain materials may be harmful if there is contact with the skin. Read carefully all the labels and safety performance data of the materials and solvents to be used. Appropriate clothes and gloves must be worn for spraying or cleaning the equipment.

### MISUSE

1. Operators should be given adequate and appropriate training in the safe use and maintenance of this equipment.
2. Pressured liquids may injure eyes. Do not point the spray gun to any person.
3. Gravity or suction feed gun must not be used for pressure feed gun.
4. Parts with compressed air may damage the human body. Connect air hoses tightly by using a spanner so that air never leaks. If tightened loosely, hoses can be removed which may result in damaging the human body, objects to be coated and other equipment used together.
5. Parts with compressed air or under spring pressure may injure the human body. When replacing such parts, clean the spray gun by discharging the materials, discharge the air, remove air hose and fluid cup and then replace such parts by placing the gun flat. Eye protection must be worn when repairing the spray gun.
6. Do not use the gun at no more than maximum working pressure (0.69MPa).

## INSTALLATION

1. The air supplied to spray gun must be cleaned air which any water, oil and solid material removed. To set up the Mist Separator and Air Transformer near the gun is recommended. The use of air not cleaned may cause coating troubles.
2. Connect fluid cup and air hoses tightly. If tightened loosely, hoses can be removed which may result in damaging the human body, objects to be coated and other equipment used together.
3. Adjust Needle Packing (17) before start using new gun. Tighten the Packing Nut (18) gradually and then to adjust the needle moving smoothly, untighten a little where the Needle (14) is not well pulled back.

## OPERATION

1. The recommended pressure of air supplied to gun is in a range of 0.39MPa~0.49Mpa. Do not supply to gun the air pressure in excess of the gun's maximum working pressure (0.69MPa).
2. Try with the pressure starting from 0.2Mpa or around as the spraying pressure varies depending upon the inner diameter of gun, triggering distance, materials etc.
3. The recommended spray distance is 180mm. If the spray distance is too far, good result does not appear.
4. In order to get uniform finishing the spray gun should be hold vertically toward the painting surface.